



SPARE PARTS LISTING SHEET FOR

1500W Belt Linisher

Stock No.06791

Part No.BL1500

KEY No.	PART No.	STOCK No.	DESCRIPTION
1	YBL1500-1	07751	Screw M4 x 6.
2	YBL1500-2	07752	Left cover.
3	YBL1500-3	07753	Work table.
4	YBL1500-4	07754	Bracket.
5	YBL1500-5	07755	Washer Ø8.
6	YBL1500-6	07756	Screw M6 x 10.
7	YBL1500-7	07757	Screw M8 x 16.
8	YBL1500-8	07758	Stop block.
9	YBL1500-9	07759	Body.
10	YBL1500-10	07760	Dust receiver.
11	YBL1500-11	07761	Driven wheel.
12	YBL1500-12	07762	Screw M6 x 12.
13	YBL1500-13	07763	Spring.
14	YBL1500-14	07764	Position tube.
15	YBL1500-15	07765	Washer Ø8.
16	YBL1500-16	07766	Nut M8.
17	YBL1500-17	07767	Elastic washer Ø8.
18	YBL1500-18	07768	Driven wheel guide.
19	YBL1500-19	07769	PinØ5 x35.
20	YBL1500-20	07770	Bolt M8 x 20.
21	YBL1500-21	07771	Shaft block.
22	YBL1500-22	07772	Hand wheel.
23	YBL1500-23	07773	Screw M6 x 30.
24	YBL1500-24	07774	Spring.
25	YBL1500-25	07775	Retaining ring Ø47.
26	YBL1500-26	07776	Bearing 204.
27	YBL1500-27	07777	Shaft.
28	YBL1500-28	07778	Washer Ø8.
29	YBL1500-29	07779	Bolt M8 x 20.
30	YBL1500-30	07780	Screw M4 x 10.
31	YBL1500-31	07781	Washer Ø4.
32	YBL1500-32	07782	Plate.
33	YBL1500-33	07783	Clip.
34	YBL1500-34	07784	Screw M6 x 50.

KEY No.	PART No.	STOCK No.	DESCRIPTION
35	YBL1500-35	07785	Plate.
36	YBL1500-36	07786	Bolt M8 x 12.
37	YBL1500-37	07787	Fence extensions.
38	YBL1500-38	07788	Nut M6.
39	YBL1500-39	07789	Nut M4.
40	YBL1500-40	07790	Motor.
41	YBL1500-41	07791	Bolt M8 x 20.
42	YBL1500-42	07792	Handle.
43	YBL1500-43	07793	Safety guard.
44	YBL1500-44	07794	Support plate.
45	YBL1500-45	07795	Right cover.
46	YBL1500-46	07796	Side fence.
47	YBL1500-47	07797	Tube.
48	YBL1500-48	07798	Pin 3 x 20.
49	YBL1500-49	07799	Spring.
50	YBL1500-50	07800	Hand bar.
52	YBL1500-52	07801	Switch.
54	YBL1500-54	07804	Stand plate.
55	YBL1500-55	07802	Screw 6 x 16.
56	YBL1500-56	07803	Screw M5 x 20.
57	APT100A	07736 - 07740	Sand belt.
58	YBL1500-58	07805	Washer Ø32.
59	YBL1500-59	07806	Drive wheel.
60	YBL1500-60	07807	Nut M6.
61	YBL1500-61	07808	Rubber washer Ø8.
62	YBL1500-62	07809	Bolt M8 x 12.
63	YBL1500-63	07810	Hand bar collecting rod.
64	YBL1500-64	07811	Nut M6.
65	YBL1500-65	07812	Screw.
66	YBL1500-66	07813	Bolt M6 x 12.
67	YBL1500-67	07814	Screw M4 x 6.
68	YBL1500-68	07815	Hinge.
69	YBL1500-69	07816	Bolt M6 x 18.
70	YBL1500-70	07817	Spring plate.

Helpline: (023) 8049 4344. **Sales Desk:** (023) 8049 4333. **General Enquiries:** (023) 8026 6355.

DRAPER TOOLS LTD, HURSLEY ROAD, CHANDLER'S FORD, EASTLEIGH, HANTS. SO53 1YF. U.K. internet: www.draper.co.uk e-mail: sales@drapertools.com

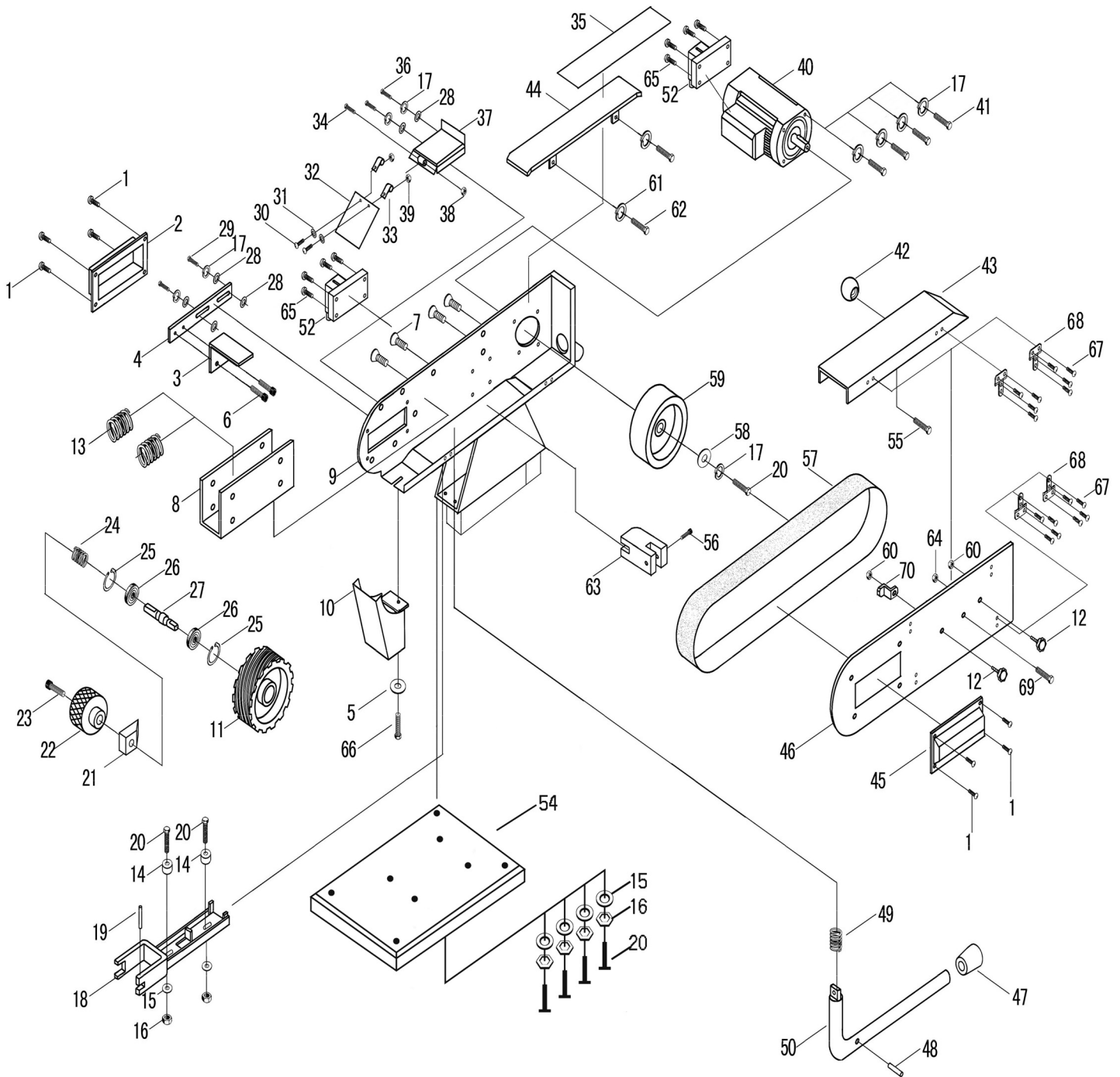


SPARE PARTS DRAWING SHEET FOR

1500W Belt Linisher

Stock No.06791

Part No.BL1500



Helpline: (023) 8049 4344. Sales Desk: (023) 8049 4333. General Enquiries: (023) 8026 6355.

DRAPER TOOLS LTD, HURSLEY ROAD, CHANDLER'S FORD, EASTLEIGH, HANTS. SO53 1YF. U.K. internet: www.drapertools.co.uk e-mail: sales@drapertools.com