

**DRAPER**<sup>®</sup>

SPARE PARTS LISTING SHEET FOR

# Infra-Red Diesel Space Heater

Stock No.54046

Part No.DSH-IR30

| KEY No. | PART No.       | STOCK No. | DESCRIPTION            |
|---------|----------------|-----------|------------------------|
| 1       | YSF2-025-001   | 61030     | Fuel Tank              |
| 2       | YR20-15016-1   | 61037     | Fuel Filter            |
| 3-1     | YSF2-025-003-1 | 61038     | Float Sensor           |
| 3-2     | YTK13-008-078  | 58533     | Float Sensor Packing   |
| 3-3     | YSF2-025-003-3 | 61039     | Fuel Pipe              |
| 3-4     | YSF2-025-003-4 | 61040     | Return Pipe            |
| 3-5     | YTK13-008-081  | 58536     | Pipe Packing           |
| 3-6     | YTK13-008-082  | 58541     | Nut                    |
| 4       | YSF2-025-004   | 61041     | Flexible Hose          |
| 5       | YSF2-025-005   | 61042     | Elbow Flexible Hose    |
| 6       | YTK13-000-005  | 58453     | Fuel Cap               |
| 7       | YSF2-025-007   | 61043     | Fuel Cap Inner Packing |
| 8       | YTK8-000-005-1 | 58454     | Fuel Cap Packing       |
| 9       | YTK8-003-003   | 33720     | Fuel Gauge             |
| 10      | YTK8-003-003-1 | 33742     | Fuel Gauge Packing     |
| 11      | YSF2-025-011   | 61044     | Tank Support-L         |
| 12      | YSF2-025-012   | 61045     | Tank Support_R         |
| 13      | YSF2-025-013   | 61046     | Cone Body              |
| 14      | YSF2-025-014   | 61047     | Bracket                |
| 15      | YSF2-025-015   | 61048     | Bracket                |
| 16      | YSF2-025-016   | 61049     | Diffuser Gasket        |
| 17      | YSF2-025-017   | 61050     | Diffuser               |
| 18      | YSF2-025-018   | 61051     | Insulator Body         |
| 19      | YSF2-025-019   | 61052     | Heat Plate             |
| 20      | YSF2-025-020   | 61053     | Cone Body Holder       |
| 21      | YSF2-025-021   | 61054     | Umbrella Bracket       |
| 22      | YM12X20        | 61055     | Bolt                   |
| 23      | YM12           | 61056     | Nut                    |
| 24      | YSF2-025-024   | 61057     | Umbrella               |
| 25      | YSF2-025-025   | 61058     | Rotate ADJ. Handle     |
| 26      | YSF2-025-026   | 61059     | Support Pipe           |
| 27      | YSF2-025-027   | 61060     | Guard Bracket          |
| 28      | YSF2-025-028   | 61061     | Guard                  |
| 29      | YSF2-025-029   | 61062     | Visor                  |
| 29-1    | YSF2-025-029-1 | 61063     | Heater Interception    |
| 30      | YSF2-025-030   | 61064     | Burner Bracket Gasket  |
| 31      | YSF2-025-031   | 61065     | Burner Head            |
| 32      | YSF2-025-032   | 61067     | Nozzle                 |
| 33      | YR20-15039     | 58691     | Burner Head Blade      |
| 34      | YR20-15084     | 58461     | Nipple                 |
| 35      | YR20-15026     | 58694     | Spark Plug             |
| 36      | YSF2-025-036   | 61068     | Burner Bracket         |

| KEY No. | PART No.     | STOCK No. | DESCRIPTION            |
|---------|--------------|-----------|------------------------|
| 37      | YSF2-025-037 | 61070     | Burner Head Gasket     |
| 38      | YSF2-025-038 | 61071     | Inner Diffusion        |
| 39      | YSF2-025-039 | 61072     | Control Base           |
| 40      | YSF2-025-040 | 61073     | Power lead             |
| 41      | YTK8-002-053 | 33439     | Cord Bush              |
| 42      | YSF2-025-042 | 61074     | Return Hose Joint Pipe |
| 43      | YR20-15229   | 61075     | Photocell              |
| 44      | YR20-15047   | 58839     | Photocell Bracket      |
| 45      | YSF2-025-045 | 61076     | Blower Casing          |
| 46      | YSF2-025-046 | 61077     | Inlet                  |
| 47      | YSF2-025-047 | 61078     | Blower Motor           |
| 48      | YSF2-025-048 | 61079     | Blower Fan             |
| 49      | YR20-15027   | 61080     | Thermostat             |
| 50      | YSF2-025-050 | 61082     | Thermostat Wire        |
| 51      | YSF2-025-051 | 61083     | Ignitor                |
| 52      | YSF2-025-052 | 61084     | Electronic Pump        |
| 53      | YSF2-025-053 | 61088     | Electronic Pump Pipe   |
| 54      | YSF2-025-054 | 61089     | Fuel Filter            |
| 55      | YSF2-025-055 | 61126     | Return Hose            |
| 56      | YSF2-025-056 | 61169     | Electronic Pump Base   |
| 57      | YSF2-025-057 | 61176     | Support                |
| 58      | YSF2-025-058 | 61177     | Main P.C.B             |
| 59      | YSF2-025-059 | 61181     | Sub P.C.B              |
| 60      | YSF2-025-060 | 61186     | P.C.B Wire             |
| 61      | YR20-15090   | 61199     | Tip Over Switch        |
| 62      | YR20-15060   | 61200     | Tip Over Switch Wire   |
| 63      | YSF2-025-063 | 61201     | Back Cover             |
| 64      | YSF2-025-064 | 61203     | Rating Plate           |
| 65      | YSF2-025-065 | 61210     | Power Switch           |
| 66      | YSF2-025-066 | 61211     | Power Switch Wire      |
| 67      | YSF2-025-067 | 61212     | Spark Plug Cover       |
| 68      | YSF2-025-068 | 61214     | Handle                 |
| 69      | YSF2-025-069 | 61219     | Wheel Support Frame    |
| 70      | YSF2-025-070 | 61231     | Wheel Axle             |
| 71      | YSF2-025-071 | 61233     | Wheel                  |
| 72      | YSF2-025-072 | 61234     | Washer                 |
| 73      | YSF2-025-073 | 61236     | Pin                    |
| 74      | YSF2-025-074 | 82075     | Pipe Washer            |
| 75      | YSF2-025-075 | 82077     | Pressure Sensor        |
| 76      | YSF2-025-076 | 82082     | Venturi                |
| 77      | YSF2-025-077 | 82094     | Pressure Sensor Hose   |

**Helpline: (023) 8049 4344. Sales Desk: (023) 8049 4333. General Enquiries: (023) 8026 6355.**

DRAPER TOOLS LTD, HURSLEY ROAD, CHANDLER'S FORD, EASTLEIGH, HANTS. SO53 1YF. U.K website: www.drapertools.com e-mail: sales@drapertools.com

PJJ260717

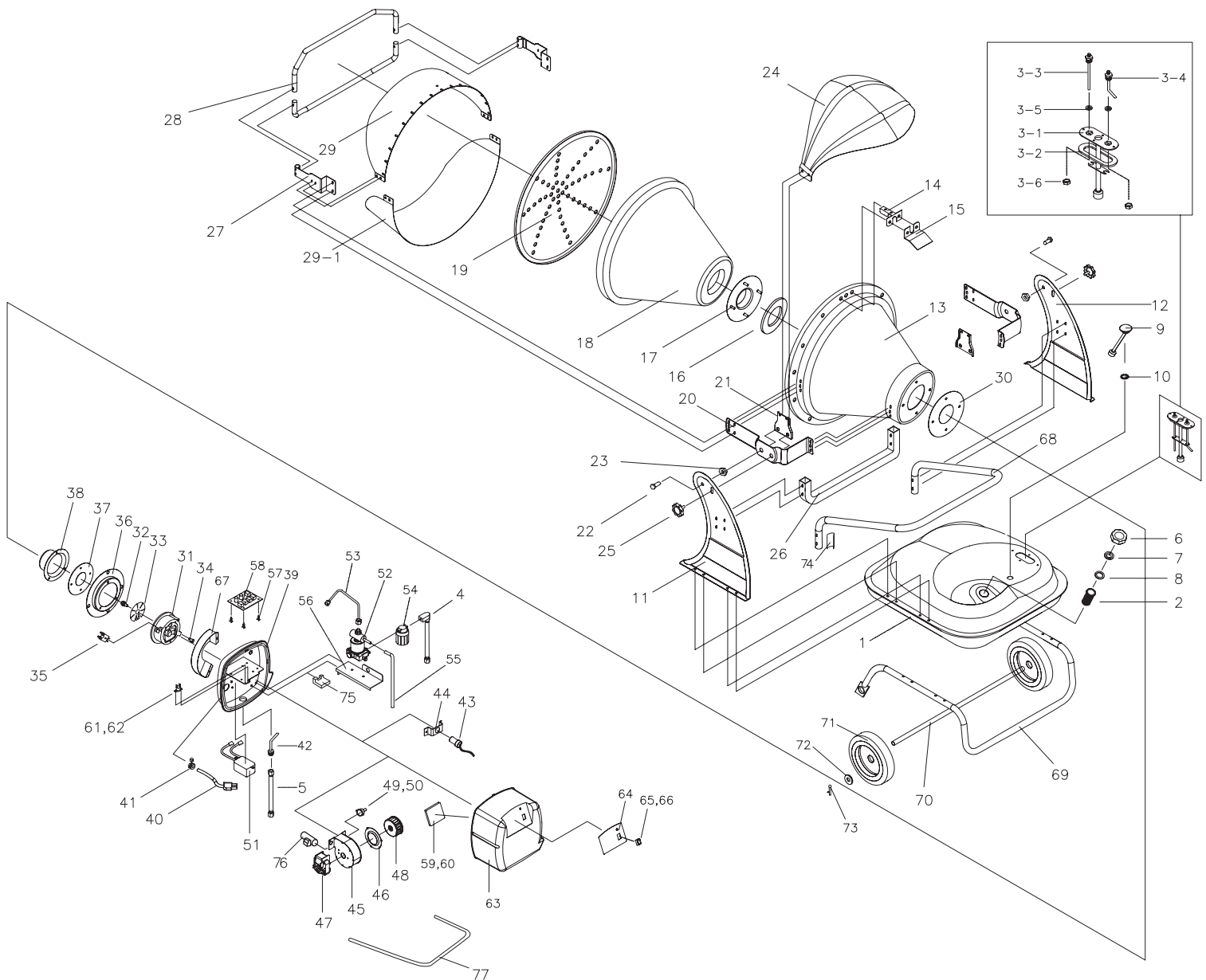


SPARE PARTS DRAWING SHEET FOR

# Infra-Red Diesel Space Heater

Stock No.54046

Part No.DSH-IR30



Helpline: (023) 8049 4344. Sales Desk: (023) 8049 4333. General Enquiries: (023) 8026 6355.

DRAPER TOOLS LTD, HURSLEY ROAD, CHANDLER'S FORD, EASTLEIGH, HANTS. SO53 1YF. U.K website: www.drapertools.com e-mail: sales@drapertools.com